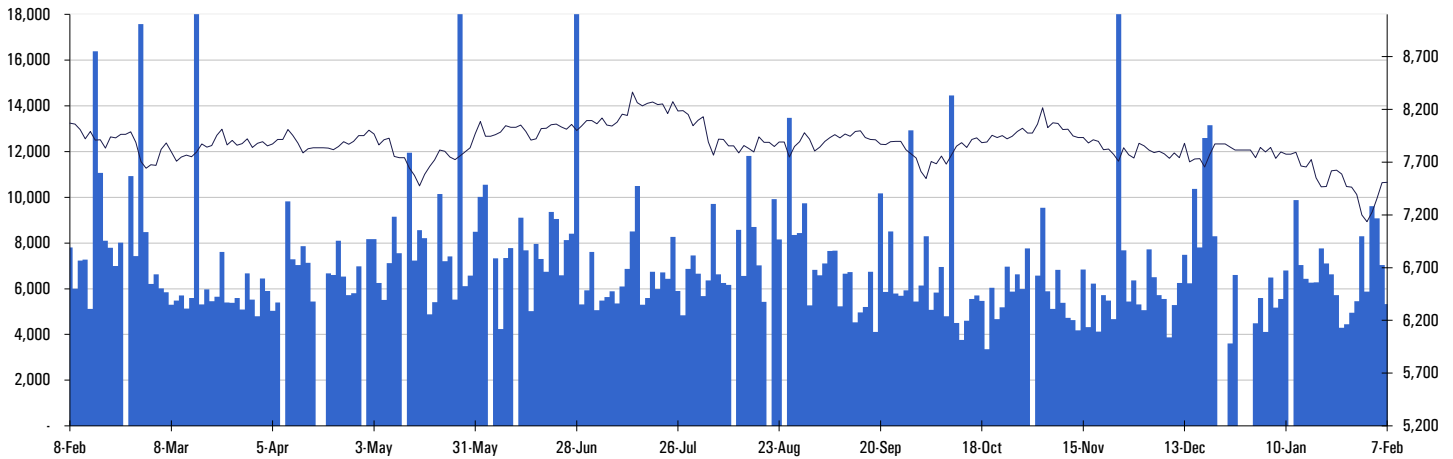


Mil Php (truncated)

**PSEi** and Total Value Traded

PSEi



**Daily PSE Index (PSEi)**

**Daily Foreign Transactions (in Thousand Php)**

Date	Open	High	Low	Close	Point Change	% Change	Buying	Selling	Net	Total	Foreign Activity (%)
03-Feb	7,206.22	7,219.61	7,129.19	7,137.03	(63.76)	(0.89)	2,693,864	2,982,929	(289,065)	5,676,793	48.35
04-Feb	7,172.41	7,276.40	7,158.20	7,226.90	89.87	1.26	4,435,731	6,664,905	(2,229,174)	11,100,636	57.75
05-Feb	7,291.44	7,276.40	7,281.42	7,352.85	125.95	1.74	6,467,711	4,927,134	1,540,577	11,394,845	62.79
06-Feb	7,373.59	7,506.51	7,373.59	7,506.51	153.66	2.09	4,438,018	3,012,532	1,425,486	7,450,549	52.91
07-Feb	7,447.33	7,507.20	7,429.61	7,507.20	0.69	0.01	2,571,769	2,283,296	288,474	4,855,065	45.57
Week 06 <sup>1</sup>		7,507.20	7,137.03	7,507.20	306.41	4.26	20,607,093	19,870,795	736,299	40,477,888	54.81
YTD <sup>2</sup>		7,840.70	7,137.03		(308.06)	(3.94)	90,038,126	96,754,828	(6,716,701)	186,792,954	56.37

**Daily Trading**

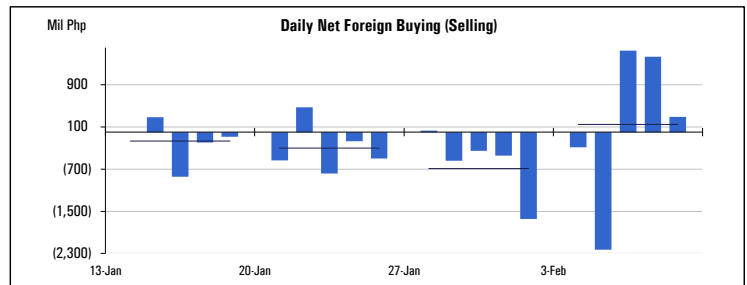
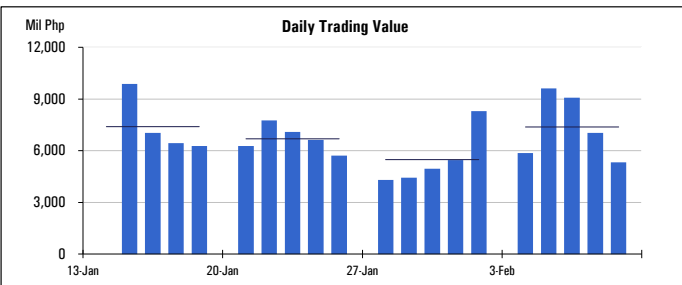
Date	Regular Market			Non-regular Market (Block Sales & Odd Lot)			Total Market		
	Volume	Value (Php)	No. of Trades	Volume	Value (Php)	No. of Trades	Volume	Value (Php)	No. of Trades
03-Feb	821,213,780	5,199,465,646	102,500	12,140,888	671,610,256	478	833,354,668	5,871,075,902	102,978
04-Feb	678,930,910	6,522,996,051	98,637	800,919,967	3,087,405,242	340	1,479,850,877	9,610,401,293	98,977
05-Feb	1,260,222,290	8,193,115,212	83,557	11,317,675	880,932,973	339	1,271,539,965	9,074,048,184	83,896
06-Feb	6,209,340,880	6,572,173,900	86,116	14,312,812	468,495,247	381	6,223,653,692	7,040,669,147	86,497
07-Feb	2,714,457,760	4,600,503,879	73,511	145,722,956	726,871,781	358	2,860,180,716	5,327,375,660	73,869
Week 06	11,684,165,620	31,088,254,688	444,321	984,414,298	5,835,315,499	1,896	12,668,579,918	36,923,570,187	446,217
Daily Ave. (Week)		6,217,650,938	88,864		1,167,063,100	379		7,384,714,037	89,243
Daily Ave. (YTD)		5,583,557,909	87,940		788,832,555	410		6,372,390,465	88,349

**Weekly Sector Summary**

Sector	Index Close	Point Change	% Weekly Change	Total Value Php '000	% Weekly Change	No. of Trades	% Weekly Change
All Shares	4,422.64	130.43	3.04	36,923,570	34.54	446,217	1.73
Financials	1,791.09	66.16	3.84	4,810,484	15.68	65,851	4.17
Industrial	9,391.68	470.24	5.27	9,032,641	83.15	149,020	13.02
Holding Firms	7,146.01	245.70	3.56	8,887,986	48.56	71,893	(3.05)
Property	4,036.80	198.06	5.16	6,589,358	(8.64)	52,666	(0.35)
Services	1,502.87	27.71	1.88	7,541,680	59.71	96,253	(0.92)
Mining & Oil	7,383.47	(279.79)	(3.65)	227,279	(44.99)	8,288	(27.52)

**Market Capitalization**

	No. of Companies	Market Capitalization (Php '000)	% Weekly Change
Total Market	268	16,126,127,939	2.87
Financials Sector	30	4,753,745,428	2.76
Industrial Sector	68	2,592,669,691	3.49
Holding Firms Sector	41	3,834,393,918	2.57
Property Sector	38	2,634,874,532	4.99
Services Sector	61	2,060,012,958	1.26
Mining & Oil Sector	24	238,932,612	(4.57)



<sup>1</sup> High and Low figures refer to the highest and lowest close for the week.

<sup>2</sup> High and Low figures refer to the highest and lowest close for the year.

— Average for the week